



Keyboard & Accessories

PRODUCT CATALOGUE 2025

"The Brands You Love, the Service You Trust"

KEYBOARD



SCAN  PRO AUDIO



"Keyboard World and Scan Pro Audio – A New Partnership for Your Musical Needs"

Exciting News from Keyboard World!

We are proud to announce that Keyboard World has been appointed a full affiliate dealer for Scan Pro Audio in the UK!

To mark this new partnership, we have produced a special catalogue featuring a wide range of popular instruments and accessories. You'll find instruments from leading brands such as Yamaha, Korg, Roland, and Ketron, along with a full selection of mixers, headphones, microphones, stands, and much more from all the major manufacturers.

All products will be supplied direct by Scan Pro Audio, complete with full warranties for your peace of mind. You'll also enjoy expert backup and support from both Keyboard World and Scan Pro Audio.

Plus, when you purchase selected items through our Keyboard World affiliate link, you'll receive exclusive free bonus software as an extra thank-you!

We are excited about our association with Scan Pro Audio and, between us, we are committed to providing you with the best service and support at all times.

We look forward to helping you find everything you need to take your music to the next level!

KEYBOARDS

An Arranger keyboard is a powerful and versatile instrument designed to provide a complete musical experience for players of all levels. Unlike traditional keyboards, arranger keyboards come equipped with intelligent accompaniment features that respond to your chord changes in real time—instantly generating full backing tracks with drums, bass, guitars, and more, all perfectly in sync with your playing.

These instruments are ideal for live performance, songwriting, and home entertainment. They feature hundreds of onboard styles across a wide range of musical genres, high-quality instrument sounds, built-in effects, and user-friendly interfaces.

Whether you're playing solo or entertaining a crowd, an arranger keyboard gives you the sound and feel of a full band at your fingertips. From hobbyists and entertainers to professional musicians, arranger keyboards offer inspiring tools for creativity, performance, and musical enjoyment.



[More info](#)

KORG PA5X 61

61-key Arranger Workstation with Semi-weighted, Aftertouch-enabled Keybed; 2,200+ Factory Sounds



[More info](#)

KORG PA5X 76

76-key Arranger Workstation with Semi-weighted, Aftertouch-enabled Keybed; 2,200+ Factory Sounds



[More info](#)

KORG PA5X 88

88-key Arranger Workstation with Aftertouch-enabled, Hammer-action Keybed; 2,200+ Factory Sounds



[More info](#)

KORG PA1000 61

61 Note Arranger Keyboard, 512 User Sounds, 256 User Drum Kits, Over 1,750 Factory Sounds



[More info](#)

KORG PA700 61

61 Note Arranger Workstation with many advanced features from KORG's flagship Pa4X. Included are 370 styles and over 1,700 sounds.



[More info](#)

KORG KRONOS 61

Music Workstation Keyboard, 61-Key Semi-Weighted Action Keyboard with Aftertouch, 8" TouchView Display



[More info](#)

KORG KRONOS 73

Music Workstation Keyboard, 73-Key Real Weighted Hammer Action 3 (RH3), 8" TouchView Display



[More info](#)

KORG NAUTILUS 88

88-key Synthesizer Workstation with RH-3 Keybed, 2,200 Sounds, Dynamic Polyphony Allocation



[More info](#)

KORG PAAS

The Korg PaAS Mk2 Pa Amplification System delivers powerful, high-fidelity sound, and can be connected with no cable to Korg's flagship arranger Pa5X.



[More info](#)

YAMAHA GENOS2

Workstation keyboard, with 76 keys incl. touch response and improved aftertouch. A total of 1,990 Voices and 800 styles. New 9 inch Color Wide touch screen LCD.



[More info](#)

YAMAHA GENOS2 WITH SPEAKERS

The Ultimate Arranger Keyboard Bundle. Yamaha Genos2 Workstation Keyboard and Yamaha GNS-MS01 Speaker Set.



[More info](#)

YAMAHA GENOS 2 WITH STAND AND SPEAKERS

Bundle with Yamaha Genos2 Workstation with L-7B Stand and GNS-MS01 Speaker Set.



[More info](#)

YAMAHA PSR-SX920 61

Powerhouse Arranger Workstation boasts over 1,500 high-quality Voices and 575 diverse Styles, all equipped with One Touch Settings.



[More info](#)

YAMAHA SPEAKER SET FOR GENOS2

Two 20W satellite speakers and 40W subwoofer will maximize the Genos' sound capability.



[More info](#)

KETRON EVENT 61

Arranger Keyboard, 61 Semi-Weighted Keys, Over 400 styles. EVENT: try it out and experience what it means to play accompanied by a full band of real musicians.



[More info](#)

KETRON EVENT 76

76 semi-weighted keys, Over 400 styles, Real, Live, MIDI. EVENT: try it out and experience what it means to play accompanied by a full band of real musicians.



[More info](#)

KETRON EVM EVENT MODULE

EVENT in a Box!
464 Voices with 3 different Sounds each, over 500 styles, 580 Live Drums, 256 Real Audio Bass, 216-Voice polyphonic



[More info](#)

KETRON EVM EVENT MODULE, BAG AND TOUCHSCREEN

EVENT in a Box!
Event Module with Bag and Touchscreen. 464 Voices with 3 Different Sounds Each



[More info](#)

KETRON EVENT-X WORKSTATION MODULE

400 Styles are available: divided into Real Styles, Live Styles or MIDI Style



[More info](#)

KETRON SD2 ORCHESTRAL WIZARD SOUND MODULE

32 MIDI Channels and DSP Effects



KETRON SD1000 SOUND MODULE

Multi DSP Effects, 512
New Orchestral Sounds,
292 GM Sounds, 47
New Drum Sets, MIDI

[More info](#)

CRUMAR KEYBOARDS

Crumar Keyboards & Organs

Renowned for their vintage character and rich, expressive sound, Crumar keyboards and organs combine classic Italian craftsmanship with cutting-edge technology.

Whether you're after the authentic tonewheel organ experience or the warmth of vintage electric pianos, Crumar instruments deliver superb playability and tone.

Perfect for both studio and stage, these instruments capture the soul of classic sounds with modern reliability.



[More info](#)

CRUMAR MOJO SUITCASE DOUBLE MANUAL ORGAN

2 x 61-Key/5 Octave
Waterfall Keyboard
with Semi-Weighted
Touch Response



[More info](#)

CRUMAR MOJO CLASSIC

Semi-Weighted
Velocity Sensitive
Waterfall Keyboard
with 61 Keys



[More info](#)

CRUMAR SEVEN 73-KEY ELECTRIC PIANO

73-Key Electric Piano
with 9 Synthesis
Engines, 32 Presets (8
factory + 24 user)



[More info](#)

CRUMAR MOJO SUITCASE LTD EDITION

61 Note Arranger
Keyboard, 512 User
Sounds, 256 User
Drum Kits, Over 1,750
Factory Sounds



[More info](#)

CRUMAR MOJO 61 DIGITAL ORGAN /ELECTRIC PIANO

61-Note Waterfall
Keyboard, 8 Preset
Sounds, Integrated Wi-Fi



[More info](#)

CRUMAR MOJOPEDALS

13 Note MIDI Pedalboard



[More info](#)

CRUMAR HALF MOON ROTARY SWITCH

Compatible models:
MOJO CLASSIC
/SUITCASE + MOJO61
Rotary effect speed:
slow, stop, fast



[More info](#)

CRUMAR EXP-10 EXPRESSION PEDAL

Long Throw Expression
Pedal with Metal Base



[More info](#)

CRUMAR SEVEN LEGS

Crumar PLS-04—a 4-
piece set of purpose-built
stage piano legs.
Compatible with Crumar
Seven or Seventeen
modeling piano

CONTROLLER KEYBOARDS

Controller Keyboards – The Heart of Every Modern Music Setup

Controller keyboards have become an essential tool for today's music makers, offering hands-on control over software instruments, DAWs, and sound modules.

Unlike traditional keyboards, controller keyboards do not produce sound on their own—instead, they act as the command centre for your digital studio, sending MIDI signals to your computer, tablet, or external hardware.

Whether you're producing electronic music, scoring for film, or triggering live samples, controller keyboards provide an expressive and tactile way to bring your music to life. Available in a wide range of sizes—from ultra-compact 25-key models perfect for travel and tight spaces, to full-size 88-key controllers with hammer-action keys for piano-style performance—there's a controller for every workflow and playing style.

Modern controllers often come equipped with assignable knobs, faders, pads, and transport controls, giving you deep integration with your DAW or virtual instruments. Some even include screens, auto-mapping functions, and RGB-lit pads for visual feedback and beat programming.

Whether you're a seasoned producer or just getting started, a controller keyboard is a powerful and flexible hub for creative expression in the digital age.



AKAI LPK25 MKII 25

Keyboard Controller,
25-Key Gen 2
Dynamic Keybed, Built-
In Arpeggiator

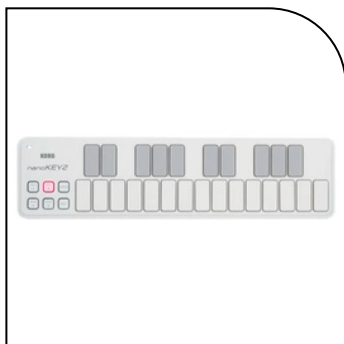
[More info](#)



NANOKEY2 USB MIDI CONTROLLER (BLACK) BY KORG

25 Non-weighted
Keys, Low Profile, Ideal
For Use With Laptops

[More info](#)



[More info](#)

KORG NANOKEY2 USB KEYBOARD

25 Keys, Not weighted,
Velocity Sensitive With 4
Curves,



[More info](#)

KORG MICROKEY-25

25-key Micro Keyboard
Controller with Built-in
USB Port and Korg M1
LE Soft Synth Bundle



[More info](#)

ARTURIA MINILAB MK II

Lightweight and portable,
The new go-to small
controller for producers
in the know



[More info](#)

ARTURIA MINILAB MK II PORTABLE MIDI CONTROLLER AND FREE COPY OF ANALOG LAB

Arturia - MiniLab Mk II &
FREE Analog Lab Pro
Software



[More info](#)

KORG MICROKEY2 37 KEY

Bus-powered 37-key USB
Keyboard Controller with
Mod Wheel, Pitch Wheel,
and Damper Pedal Input



[More info](#)

NOVATION - FLKEY MINI

MIDI Controller Keyboard
for FL Studio, 25 Keys, 8
Pots, 16 Pads



[More info](#)

NATIVE INSTRUMENTS COMPLETE KONTROL M32

Micro Sized Controller
Keyboard with Synth
Action Keybed



[More info](#)

KORG - 'NANOKEY STUDIO' MOBILE MIDI KEYBOARD

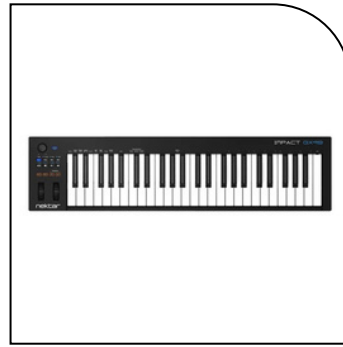
Eight High-Sensitivity
Trigger Pads, Touch Pad



[More info](#)

NOVATION LAUNCHKEY MINI 37 MK4

37-Note Synth-Style Mini Keyboard, 16 Velocity-Sensitive Pads



[More info](#)

NEKTAR IMPACT GX49 USB MIDI CONTROLLER KEYBOARD

49 Key Controller Keyboard, Pitch Bend and Modulation Wheels, Transport Buttons, DAW Integration



[More info](#)

ROLAND A49 BK 49-KEY MIDI CONTROLLER (BLACK)

Lightweight, slimline 49-key MIDI controller keyboard



[More info](#)

NATIVE INSTRUMENTS - 'KOMplete KONTROL A49' KEYBOARD CONTROLLER

49-Key USB MIDI Controller Keyboard with NKS



[More info](#)

NOVATION IMPULSE 49 USB CONTROLLER KEYBOARD

USB 49-Key Controller Keyboard With Aftertouch, 8 Pads, 8 Knobs, 8 Faders, 2 Wheels, MIDI In/Out



[More info](#)

NEKTAR PANORAMA T4 CONTROLLER KEYBOARD

49-Key MIDI Controller Keyboard with Deep Instrument / DAW Control, 8 Pads, Chord Mode



[More info](#)

KORG KEYSTAGE 49 MIDI 2.0 CONTROLLER

A powerful MIDI 2.0 controller keyboard, Polyphonic Aftertouch, MPE compatibility, and exceptional touch response.



[More info](#)

NATIVE INSTRUMENTS KOMplete KONTROL S49 MK3

An intelligent keyboard controller, designed to be at the core of any studio



[More info](#)

KORG MICROKEY2 61-KEY KEYBOARD CONTROLLER

Bus-powered 61-key
USB Keyboard
Controller with Mod
Wheel, Pitch Wheel, and
Damper Pedal Input



[More info](#)

ARTURIA KEYLAB ESSENTIAL 3 61 NOTE CONTROLLER KEYBOARD - WHITE

KeyLab Essential mk3 is the
focused, accessible, and fun
keyboard controller



[More info](#)

ARTURIA KEYLAB ESSENTIAL 61 MIDI CONTROLLER KEYBOARD

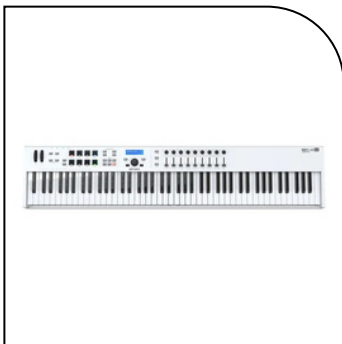
61 Keys, 8 Pads, 9
Faders, Transport
Controls, Analog Lab
Integration



[More info](#)

NOVATION IMPULSE 61 USB CONTROLLER KEYBOARD

USB 61-Key Controller
Keyboard With Aftertouch,
8 Pads, 8 Knobs, 8
Faders, 2 Wheels, MIDI
In/Out



[More info](#)

ARTURIA - KEYLAB ESSENTIAL 88

88-note MIDI Controller
Keyboard with Extensive
Hands-on Controls, 8
Performance Pads



[More info](#)

STUDIOLOGIC - SL73 STUDIO MIDI CONTROLLER

73 Premium Hammer
Action Keys, 250
Programs, MIDI
Assingable



[More info](#)

STUDIOLOGIC SL88 STUDIO USB MIDI CONTROLLER KEYBOARD

88 Key Controller
Keyboard, Weighted Keys,
3x X/Y Sticks, TFT Screen,
USB, Lightweight



[More info](#)

KORG KEYSTAGE 61 MIDI 2.0 CONTROLLER

A powerful MIDI 2.0
controller keyboard,
nparalleled control,
Polyphonic Aftertouch,
MPE compatibility, and
exceptional touch
response



[More info](#)

**ARTURIA KEYLAB 88
MKIII ADVANCED
MIDI CONTROLLER -
BLACK**

88-Key Advanced MIDI
Controller, Hammer-
Action Keybed, 3.5" Full-
Colour Screen



[More info](#)

**ROLAND A-88MKII
MIDI KEYBOARD
CONTROLLER**

88 Keys, 8x Pads, 8x Knobs,
Midi I/O, USB Type-C



[More info](#)

**ARTURIA KEYLAB 88
MKIII ADVANCED
MIDI CONTROLLER -
WHITE**

88-Key Advanced MIDI
Controller, Hammer-
Action Keybed, 3.5" Full-
Colour Screen (White)

DIGITAL PIANOS

Digital Pianos – Timeless Sounds with a Modern Touch

Digital pianos have become a staple sound for players of all genres, from jazz and soul to pop, rock, and beyond. Offering a warm, expressive tone that blends beautifully with other instruments, electric piano voices are among the most loved and versatile sounds found on today's keyboards.

Inspired by iconic instruments like the Fender Rhodes, Wurlitzer, and Yamaha CP series, modern electric piano sounds combine vintage character with digital clarity and reliability. From smooth, bell-like tones perfect for ballads and jazz, to biting, overdriven sounds for funk and rock, digital pianos can suit just about any style. Many arranger and workstation keyboards feature a wide range of electric piano voices, often complete with realistic amp simulation, vintage effects like chorus, tremolo, and phaser, and responsive touch dynamics that let you truly play with feeling.

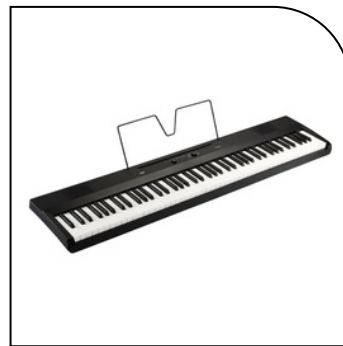
Whether you're performing live, recording in the studio, or simply enjoying playing at home, digital pianos deliver timeless character with modern performance.



[More info](#)

ROLAND GO:PIANO 88 (GO-88PX)

88-Key Digital Piano,
64 Voice Polyphony,
40 Presets, USB-C
and Bluetooth
Audio/MIDI



[More info](#)

KORG - LIANO

88-Key Digital Portable
Piano with Custom
Designed Speakers,
120 Voices, 8 Sounds



[More info](#)

YAMAHA P-145

88-Key Compact
Digital Piano. Players
who are looking for a
weighted keyboard that
feels like an acoustic
piano



[More info](#)

ROLAND FP-30X-BK

88-key Digital Piano
with SuperNATURAL
Modeling, PHA-4
Keyboard, Progressive
Hammer Action, Black



[More info](#)

ROLAND FP-30X-WH

88-key Digital Piano with SuperNATURAL Modeling, PHA-4 Keyboard, Progressive Hammer Action, White



[More info](#)

YAMAHA P-225

Digital Piano Compact 88 Graded Hammer Compact (GHC) Keys with Speakers



[More info](#)

ROLAND F107

88-Key Digital Piano, PHA-4 Standard Keyboard, SuperNATURAL Piano Technology (Black)



[More info](#)

YAMAHA DGX-670 BLACK

88-Key Portable Digital Grand Piano with Speakers (Black). 630 Instrument Sounds/263 Accompaniments



[More info](#)

YAMAHA DGX-670 WHITE

88-Key Portable Digital Grand Piano with Speakers (Black). 630 Instrument Sounds/263 Accompaniments



[More info](#)

YAMAHA - ARIUS YDP-145

88-key Digital Piano with GHS Weighted Keys, 192-note Polyphony - Rosewood. The rich sound of a Yamaha CFX concert grand



[More info](#)

YAMAHA YDP-145 BLACK

88-key Digital Piano with GHS Weighted Keys, 192-note Polyphony - Rosewood. The rich sound of a Yamaha CFX concert grand



[More info](#)

YAMAHA YDP-145 WHITE

88-key Digital Piano with GHS Weighted Keys, 192-note Polyphony - Rosewood. The rich sound of a Yamaha CFX concert grand



[More info](#)

YAMAHA CLP-825B

88-Key Clavinova Digital Piano with Grand Expression Modeling and Speaker System - Black. GrandTouch-S™ keyboard with wooden keys.



[More info](#)

YAMAHA CLP-825WH

88-Key Clavinova Digital Piano with Grand Expression Modeling and Speaker System - White. GrandTouch-S™ keyboard with wooden keys.



[More info](#)

YAMAHA P-S500

88-Key Digital Piano, 370 Accompaniments, 403 Songs (Black). Huge variety of 660 high-quality instrument Voices, including Super Articulation Voices



[More info](#)

YAMAHA P-S500

88-Key Digital Piano, 370 Accompaniments, 403 Songs (White). Huge variety of 660 high-quality instrument Voices, including Super Articulation Voices



[More info](#)

ROLAND - HP702

88-key Digital Upright Piano with PHA-4 Standard Keyboard, SuperNATURAL Sound Engine, Charcoal Black



[More info](#)

ROLAND HP702

88-key Digital Upright Piano with PHA-4 Standard Keyboard, SuperNATURAL Sound Engine, White.



[More info](#)

ROLAND HP702

88-key Digital Upright Piano with PHA-4 Standard Keyboard, SuperNATURAL Sound Engine, Dark Rosewood



[More info](#)

YAMAHA - P-525B

Electric Piano with Authentic Piano Quality and Functionality. GrandTouch-S™ keyboard with wooden keys. CFX and Bösendorfer Imperial piano samples



[More info](#)

ROLAND FP-90X

88-key Digital Piano with PureAcoustic Piano Modeling, PHA-50 Keyboard Wood/Hybrid Keys, Mic Input, White. Roland's Next-Generation Flagship Digital Piano



[More info](#)

ROLAND FP-90X

88-key Digital Piano with PureAcoustic Piano Modeling, PHA-50 Keyboard Wood/Hybrid Keys, Mic Input, Black. Roland's Next-Generation Flagship Digital Piano



[More info](#)

ROLAND HP704

88 Key Digital Piano with Stand, SuperNATURAL Piano Modeling Technology (Charcoal Black). Non-piano sounds such as electric piano, strings, organ, and many others



[More info](#)

ROLAND HP704

88 Key Digital Piano with Stand, SuperNATURAL Piano Modeling Technology (White). Non-piano sounds such as electric piano, strings, organ, and many others



[More info](#)

ROLAND HP704

88 Key Digital Piano with Stand, SuperNATURAL Piano Modeling Technology (Light Oak). Non-piano sounds such as electric piano, strings, organ, and many others



[More info](#)

ROLAND HP704

88 Key Digital Piano with Stand, SuperNATURAL Piano Modeling Technology (Dark Rosewood). Non-piano sounds such as electric piano, strings, organ, and many others



[More info](#)

ROLAND LX-5

88-Key Upright Piano with Piano Reality Modeling Sound Engine (Charcoal Black). Hybrid Keyboard, Hammer Action, Ebony/Ivory Feel Touch Sensitivity High Precision.



[More info](#)

ROLAND LX-5

88-Key Upright Piano with Piano Reality Modeling Sound Engine (Dark Rosewood). Hybrid Keyboard, Hammer Action, Ebony/Ivory Feel Touch Sensitivity High Precision.

MIXERS

Mixers (Analogue & Digital)

Mixers are essential audio devices used to combine, route, and adjust the levels, tone, and dynamics of multiple audio signals. Found in studios, live sound setups, and broadcast environments, mixers are the control centre for audio processing. They allow musicians, sound engineers, and producers to shape and balance audio sources such as microphones, instruments, and playback devices.

Analogue mixers use physical circuitry to process audio signals. Known for their warm, natural sound and hands-on control, they are favoured in many live sound and traditional studio environments. Analogue mixers typically feature knobs and faders for each channel, making them intuitive and straightforward to use.

Digital mixers, on the other hand, process signals using digital technology. They offer advanced features such as built-in effects, scene recall, multi-track recording, and remote control via tablets or computers. Digital mixers are highly flexible, often more compact, and ideal for complex setups where space, control, and automation are key. Whether analogue or digital, mixers remain vital tools for achieving a professional and balanced sound in any audio environment.

ANALOGUE MIXERS



[More info](#)

MACKIE - 'MIX5'

5 Channel Analogue Compact Mixer, 2-Band EQ, RCA Inputs/Outputs, Studio Quality Mic/Line Input



[More info](#)

MACKIE - 'MIX8'

8 Channel Analogue Compact Mixer, Phantom Power, 3-Band EQ, RCA Inputs/Outputs



[More info](#)

KORG VOLCA MIX

Compact Analogue Multi-Function Four-Channel Mixer, 3 DC Outputs, Analogue Effects, Built-In Speakers



[More info](#)

ALLEN & HEATH ZED

6 Analogue Mixer, 6-Channels, 2 High Impedance DI Inputs, 48V Phantom Power



[More info](#)

YAMAHA - 'MG06'

6-channel Analogue Mixer with 2 Microphone Preamps, 4 Dedicated Stereo Line Channels



[More info](#)

MACKIE - 'MIX12FX'

12 Channel Compact Mixer With Effects, 3-Band EQ, RCA Inputs/Outputs



[More info](#)

HH Q6FX 6

6-Channel Analogue Mixing Console, 2 Mic In, 2 Stereo Line In, FX, USB



[More info](#)

RCF - F 6X

6-Channel Analogue Mixing Console with Multi-FX, 2 Mic/Line Inputs, 2 Stereo Line Inputs



[More info](#)

MACKIE - 'PROFX6V3'

6-Channel Professional Effects Analogue Mixer With USB, Onyx Mic Preamps, 24 FX, 100Hz Low-Cut, Phantom Power



[More info](#)

YAMAHA - MG06X

6-channel Analogue Mixer with 2 Microphone Preamps, 4 Dedicated Stereo Line Channels



[More info](#)

ALLEN & HEATH ZEDI-8

Hybrid Analogue Compact Mixer and USB Audio Interface. 8 Channel, 2x2 USB Audio Interface, 2 Mic / Line Inputs, 2 High Impedance DI Inputs



[More info](#)

YAMAHA - 'MG10'

10-channel Analogue Mixer with 4 Microphone Preamps, 3 Dedicated Stereo Line Channels



[More info](#)

YAMAHA - MG10X CV

10-Channel Analogue Mixing Console: Max. 4 Mic / 10 Line Inputs (4 mono + 3 stereo)/1 Stereo Bus/1 AUX



[More info](#)

RCF - F 10XR 10

10-Channel Analogue Mixing Console with Multi-FX & Recording, PRO DSP FX 2/3-Band EQ, Stereo Recording & Playback



[More info](#)

HH Q8FX 8

8 Channel Analogue Mixing Console – 4 Mic In, 3 Stereo Line In, Compression, FX, USB



[More info](#)

MACKIE PROFX6V3+ MIXER

6-Channel Analogue Mixer, 24-Bit / 192 kHz 2x4 USB-C Audio Interface



[More info](#)

ALLEN & HEATH ZEDI-10

10-Channel Live + USB Analogue Recording Mixer, 24 Bit/96k 4x4 Audio Interface, 2 High Impedance DI Inputs



[More info](#)

MACKIE - 'PROFX10V3

10-Channel Analogue Effects Mixer With USB, Onyx Mic Preamps, 24 FX, 100Hz Low-Cut, Phantom Power



[More info](#)

YAMAHA - MG10XU

10-channel Analogue Mixer with 4 Microphone Preamps, 3 Dedicated Stereo Line Channels



[More info](#)

MACKIE - '1202VLZ4

12-Channel Compact Analogue Mixing Desk, ONYX Preamps, Phantom Power, 3-Band EQ



[More info](#)

YAMAHA - MG10XUF

10 Channel Analogue
Mixing Console, D-PRE
preamp, SPX processor
with 24 effects
programs



[More info](#)

ALLEN & HEATH ZEDI-10FX

10-Channel Analogue
Live + USB Recording
Mixer with FX, 24 Bit/96k
Interface, 2 High
Impedance DI Inputs



[More info](#)

MACKIE PROFX10V3+ MIXER

Analogue Mixer with
Enhanced FX, USB
Recording Modes and
Bluetooth



[More info](#)

YAMAHA - 'MG12' 12-CHANNEL MIXER

12-channel Analogue
Mixer with 4 x XLR/TRS
Combo, 2 x XLR, 4 x
TRS Microphone
Preamps



[More info](#)

RCF - F 12XR

12-Channel Analogue
Mixing Console with Multi-
FX & Recording, PRO
DSP FX 2/3-Band EQ,
Stereo Recording &
Playback



[More info](#)

ALLEN & HEATH ZED-10FX

Multi-Purpose Analogue
Mixer with FX for Live
Sound & Recording. 4
mic/line inputs, 2 stereo
sources with MP3 player
compatibility



[More info](#)

YAMAHA - MG12X CV

2-Channel Analogue Mixer,
Max. 6 Mic/12 Line Inputs
(4 mono + 4 stereo) 2
GROUP Buses + 1 Stereo
Bus/2 AUX



[More info](#)

MACKIE - PROFX12V3

12-Channel Analogue
Effects Mixer With USB,
Onyx Mic Preamps, 24 FX,
100Hz Low-Cut, Phantom
Power



[More info](#)

HH Q12FX 12

12 Channel Analogue Mixing Console – 6 Mic In, 4 Stereo Line In, 2 Sub, Comp, FX, USB



[More info](#)

MACKIE ONYX8

8-channel Analogue Mixer with 24-bit/96kHz Multi-track Recording and Built-in Effects



[More info](#)

PRESONUS STUDIO LIVE AR8C

Studio Interface, Analogue Mixer, Recorder, 24-bit, Up to 96kHz, USB2.0 Interface, SD Recorder



[More info](#)

MACKIE PROFX12V3+

6-Channel Analogue Mixer with Enhanced FX, USB Recording Modes and Bluetooth



[More info](#)

YAMAHA - 'MG12XU'

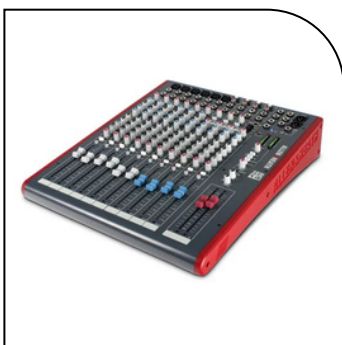
12-Channel Analogue Mixer, 6 Mic / 12 Line Inputs (4 mono + 4 stereo) / 2 GROUP Buses + 1 Stereo Bus



[More info](#)

PRESONUS STUDIO LIVE AR12C

Audio Interface, Mixer, Recorder, 24-bit, Upto 96kHz, USB2.0 Type-C Interface, SD Recorder



[More info](#)

ALLEN & HEATH ZED

14 Multi-Purpose Analogue Mixer for Live Sound & Recording. 12-channels with 6 mono channels and 4 stereo channels.



[More info](#)

MACKIE - 'PROFX16V3'

16-Channel Effects Mixer With USB, Onyx Mic Preamps, 24 FX, 100Hz Low-Cut, Phantom Power



[More info](#)

ALLEN & HEATH ZED60

14-channel Analogue Mixer with 8 Mic/Line Channels, 3 Stereo Channels



[More info](#)

YAMAHA - MG16X CV

16-Channel Analogue Mixer, Max. 10 Mic/16 Line Inputs (8 mono + 4 stereo)/4 GROUP Buses + 1 Stereo Bus/4 AUX

DIGITAL MIXERS



[More info](#)

ZOOM PODTRAK P8

Podcast Mixer, 6 XLR mic inputs, 4.3" Full-colour LCD touchscreen display. Record up to 13 tracks simultaneously



[More info](#)

BOSE - T4S

4-channel Digital Mixer for ToneMatch Port-equipped Bose Speaker Systems with Onboard DSP



[More info](#)

ZOOM LIVETRAK L-12

12 Digital Mixer, 12 Channel, 8 Mic Pres, 5 Headphone Outs, 14-In / 4-Out USB Audio Interface



[More info](#)

PRESONUS STUDIOLIVE 16.0.2 USB

16-Channel Digital Mixer with 12 XMAX Preamps, QMix, Built-in DSP Effects, USB 2.0 Audio



[More info](#)

BOSE - T8S

8-channel Digital Mixer for ToneMatch Port-equipped Bose Speaker Systems with Onboard DSP



[More info](#)

ZOOM L-20 LIVETRAK

20-Channel Digital Console, Parametric EQ, 2 EFX Sends, 2 Hi-Z Inputs, Transport Controls



[More info](#)

ALLEN & HEATH - CQ18T

Compact 18-Channel Digital Mixer with Touchscreen. 4 FX engines, 3 Custom Rotaries, 3 Custom SoftKeys



[More info](#)

YAMAHA DM3-S

Standard Digital Mixing Console, 16 Mono + 1 Stereo + 2 FX Return, 9" Multi-Touch Screen



[More info](#)

ALLEN AND HEATH QU-PAC

Ultra Compact Digital Mixer with Touchscreen Control, 16 AnaLOGIQ recallable preamps, 16 XLR/TRS In



[More info](#)

PRESONUS STUDIO LIVE 32SC

Subcompact 32-Channel Digital Mixer and USB Audio Interface

PA SYSTEMS

PA Systems for Keyboard Players – Get Heard Loud and Clear

As a keyboard player, having a reliable PA system is just as important as the instrument you're playing. Whether you're performing at home, in a band, at a venue, or leading a worship service, a good PA system ensures your sound is projected clearly, with full tonal range and the power to reach your audience.

Unlike guitar amps or traditional speakers, PA systems are designed to reproduce the full frequency range of a keyboard—from deep bass tones to sparkling highs—without distortion. This makes them the ideal choice for arranger workstations, digital pianos, synthesizers, and stage pianos.

For solo performers and small venues, compact all-in-one PA units with built-in mixers, reverb, and Bluetooth playback are perfect. They're easy to transport, quick to set up, and provide excellent clarity for both keys and vocals. If you're playing with a band or in larger spaces, modular PA systems with more power and connectivity options give you the flexibility and punch needed to cut through the mix.

Many keyboard players now choose stereo-capable PA setups to preserve the depth and richness of their instrument's sound. Some systems even offer multiple channels, so you can plug in your keyboard, mic, and backing tracks—all in one compact rig.

Whether you're rehearsing, gigging, or leading a singalong, the right PA system helps your keyboard sound its very best, wherever you play.



[More info](#)

YAMAHA STAGEPAS 100 PORTABLE PA SYSTEM

Portable PA System,
100 W Class-D
Amplifier, 3-Channel
Mixer, H90° x V90°
Coverage



[More info](#)

YAMAHA - DBR10 ACTIVE LOUDSPEAKER

10" 2-way Powered
Loudspeaker, Onboard
Mixer, FIR-X Tuning,
DSP-Controlled
Protection



[More info](#)

**YAMAHA - DBR12
ACTIVE
LOUDSPEAKER**

12" 2-way Powered
Loudspeaker, Onboard
Mixer, FIR-X Tuning,
DSP-Controlled
Protection



[More info](#)

**ELECTROVOICE -
ELX200-10P-EU - 10"
2-WAY POWERED
SPEAKER**

10" 2-Way Powered
Speaker - Black



[More info](#)

**YAMAHA -
STAGEPAS 400BT
PORTABLE SYSTEM
WITH BLUETOOTH**

400W Portable PA with
Reverb-equipped 8-
channel Mixer, Bluetooth
connectivity



[More info](#)

**BOSE S1 PRO +
BATTERY POWERED
PA SYSTEM - BLACK**

All-in-one wireless PA
system, Integrated 3-
channel mixer.



[More info](#)

**YAMAHA-STAGEPAS
600BT PORTABLE PA
SYSTEM WITH
BLUETOOTH**

680W Portable PA with
Reverb-equipped 10-
channel Mixer, Bluetooth
connectivity

M I C R O P H O N E S

Microphones for Keyboard and Piano Players

If you're a keyboard or piano player performing live, recording at home, or creating online content, a good microphone can make a big difference—especially when singing, adding vocals to your tracks, or miking up an acoustic piano.

Types of Microphones:

Dynamic Microphones: Ideal for live vocals. They're robust, handle high volumes well, and are less prone to feedback on stage.

Condenser Microphones: Great for studio use or miking an acoustic piano. They capture more detail and have a brighter, more natural sound.

USB Microphones: Perfect for home recording and online streaming. Plug directly into your computer or tablet—no extra gear needed.

What to Look For

Live Performers: Choose a durable dynamic mic with a cardioid pickup pattern to focus on your voice and reduce background noise.

Studio Recording: A condenser mic will give you crisp vocals and work well for acoustic pianos or adding ambience.

Home Users & Creators: USB mics offer plug-and-play simplicity and surprisingly good quality for the price.



[More info](#)

TASCAM TM-82 DYNAMIC MICROPHONE

Microphone for Vocals and Instruments,
Cardioid Pattern, inc
Mic Holder 3 pin XLR



[More info](#)

AUDIO-TECHNICA MB1K CARDIOID DYNAMIC MICROPHONE

Cardioid Dynamic
Microphone



[More info](#)

SHURE PGA48 DYNAMIC VOCAL MICROPHONE

Vocal Microphone,
Cardioid Pattern, Freq
70 - 16,000 Hz, XLR 3-
Pin, 600 Ohm



[More info](#)

AKG P3S DYNAMIC MIC MICROPHONE

Live Dynamic Cardioid
Microphone



[More info](#)

MACKIE EM-89D DYNAMIC MIC

Cardioid Dynamic Vocal
Microphone



[More info](#)

SHURE PGA58 CARDIOID DYNAMIC VOCAL MICROPHONE

Cardioid Dynamic Vocal
Microphone, Cardioid
Pattern, Freq 50 - 16,000 Hz,
XLR 3-Pin, 150 Ohms



[More info](#)

SENNHEISER E 825- S MICROPHONE

Dynamic Vocal
Microphone, Cardioid, 3-
pin XLR-M, Anthracite,
Includes Clip and Bag



[More info](#)

RODE M1 LIVE PERFORMANCE DYNAMIC MICROPHONE

Live Performance Dynamic
Microphone



[More info](#)

SENNHEISER E 845 S VOCAL MICROPHONE

Dynamic Super-Cardioid
Microphone for Vocals,
40 - 16000 Hz, XLR



[More info](#)

BEYERDYNAMIC TG V50D DYNAMIC

Dynamic Microphone



[More info](#)

**SHURE PGA58BTS
VOCAL
MICROPHONE PACK**

Dynamic Vocal
Microphone Pack,
Cardioid Pattern, Tripod
Stand, Stand Adapter,
XLR Cable and Carry
Pouch



[More info](#)

**SHURE SM58
DYNAMIC VOCAL
MICROPHONE XLR 3
PIN**

Dynamic Vocal
Microphone, Cardioid
Pattern, Freq 50 - 15,000
Hz, XLR 3-Pin, 150 Ohms



[More info](#)

**SHURE SM58
DYNAMIC VOCAL
MICROPHONE
(WITH SWITCH)**

Vocal Microphone (With
Switch), Cardioid Pattern,
Freq 50 - 15,000 Hz, XLR
3-Pin, 150 Ohms



[More info](#)

**SHURE - 55SH
SERIES II ICONIC
UNIDYNE VOCAL
MICROPHONE**

Iconic Unidyne Vocal
Microphone, Cardioid
Pattern, Freq 50 - 15,000 Hz,
XLR 3-Pin, 150 Ohm



[More info](#)

**BEYERDYNAMIC
M201 TG
MICROPHONE**

The classic dynamic,
"workhorse stable"
microphone for all
instrumental applications

HEADPHONES

Wired Headphones for Keyboards & Digital Pianos

Accurate Sound, Private Practice, Total Focus.

Enhance your playing experience with our specially selected range of wired headphones—perfectly suited for digital pianos, arranger keyboards, and synthesizers.

Designed to deliver clear, full-range sound with accurate tone reproduction, these headphones are ideal for both practice and performance. Whether you're working on technique, composing new music, or simply playing for enjoyment, a good pair of headphones ensures you hear every nuance—without disturbing others. Our range includes models with closed-back designs to minimise sound leakage and padded earcups for comfort during extended sessions.

Each pair features a reliable wired connection to ensure zero latency, consistent audio quality, and seamless compatibility with all major keyboard brands. From compact foldable models for home use to professional-grade studio monitors, we offer solutions for every player and budget. Experience your instrument the way it was meant to be heard—with clarity, comfort, and complete focus.



[More info](#)

ROLAND RH-5

Closed-Back Headphones, 40mm Drivers, 32 Ohms, 10–22,000 Hz



[More info](#)

MACKIE - MC-100

Closed-back Headphones, 15Hz–20kHz Frequency Response with Padded Headband and 1/4-inch Adapter



[More info](#)

SHURE SRH240A

Professional Quality Headphones, Neodymium Magnet, 40mm Drivers, 20Hz – 20kHz, 38 Ohms



[More info](#)

AUDIO-TECHNICA ATH-M20X

For Home Recording and Mixing. 40mm Neodymium Dynamic Drivers. 15 Hz to 20 kHz Frequency Response



[More info](#)

AKG K52

Over-Ear Monitoring Headphones, Closed Back, 32 Ohms, 40mm Drivers, Lightweight, 3.5mm Jack, Black



[More info](#)

KRK - KNS 6402

Closed-Back Studio Headphones, 122 dB Max Peak SPL, 10Hz - 22kHz Frequency Response



[More info](#)

SENNHEISER HD 200 PRO

Noise Reducing Studio Headphones, Closed Back, 32 Ohms, 20Hz-20kHz, 2m Cable, 3.5mm Jack



[More info](#)

AUDIO-TECHNICA ATH-M30X

40 mm drivers with rare earth magnets and copper-clad aluminum wire voice coils Tuned for enhanced detail, with excellent mid-range definition



[More info](#)

YAMAHA - HPH-150

Open-back Headphones, Detachable 6.3 mm Stereo cable. 20Hz - 20kHz Frequency response.



[More info](#)

AKG K361

The K361 headphones feature an impressive frequency response of 15 Hz to 28 kHz, and provide you with deeper bass response and higher highs than any other model in their class.



[More info](#)

ROLAND RH-200S

Closed Back Headphones, 20-20,000 Hz Frequency Response, 40mm drivers, 180° rotating ear pieces



[More info](#)

SENNHEISER HD 25

LIGHT Dynamic Closed Back Headphones, 60 Ohm, 114dB SPL, 30Hz - 16kHz



[More info](#)

YAMAHA - HPH-MT5 WHITE

Closed-back, Circumaural Headphones with 40mm Drivers and Rectangular Ear Cups - White. Audible spectrum (20Hz-20kHz)



[More info](#)

SONY MDR-7506/1

Closed Back Stereo Professional Headphones - Black. Frequency range 10Hz-20kHz



[More info](#)

SHURE SRH440A

Professional Studio Headphones, Neodymium Magnet, 40mm Drivers, 10Hz - 22kHz, 44 Ohms



[More info](#)

AUDIO-TECHNICA ATH-M40X

professional monitor headphones. 15 - 24,000 Hz Frequency Response. 98 dBSensitivity.



[More info](#)

AUDIX - 'A140

Professional Studio Headphones w/ Soft Case. Closed-back Circumaural Headphones, with 90-degree Swiveling Ear Cups, and 5.9-foot Detachable Cable



[More info](#)

AKG K271 MKII

These headphones have a maximum power output of 22mW, 55ohms impedance and a frequency range between 16Hz - 28kHz. The K271 MK II sounds clean, smooth and very rich.



[More info](#)

RODE - NTH-100

Closed-back Circumaural Headphones with 40mm Drivers, 5Hz-35kHz Frequency Response



[More info](#)

YAMAHA - HPH-MT5

Closed-back, Circumaural Headphones with 40mm Drivers and Rectangular Ear Cups - Black



[More info](#)

SENNHEISER HD 25

On-Ear DJ Monitoring Headphones, Closed Back, 70 Ohms, Lightweight, 3.5mm Jack, 6.3mm Adaptor, Black



[More info](#)

BEYERDYNAMIC - 'DT 770 PRO

Studio Reference Headphones, Closed-Back, 80 Ohm, 5Hz - 35kHz, 45mm Driver



[More info](#)

SHURE SRH840A

Closed-back Studio Monitoring Headphones with 1/8" Cable and 1/4" Adapter. 5Hz-25kHz Frequency Response



[More info](#)

AUDIO-TECHNICA - 'ATH-M50X

Pro Studio Monitor Headphones, 15Hz - 28kHz, 38 Ohms, 45mm Driver



[More info](#)

YAMAHA - HPH-MT7 WHITE

Closed-back, Circumaural Headphones with 40mm Drivers and Round Ear Cups - White. 15Hz-25kHz Frequency Response



[More info](#)

ROLAND RH-300

Closed Back Headphones, 10 - 25,000Hz frequency response, 45mm drivers, 1/4" Adapter, Carry Pouch



[More info](#)

FIIO FT1

32 Ohm Large Dynamic Driver Headphones with Solid Wood Cups, includes Case and Adapters



[More info](#)

SENNHEISER OVER EAR HD 25 PLUS

Over-Ear DJ Monitoring Headphones, Closed Back, 70 Ohms, Lightweight, 3.5mm Jack, with Accesories



[More info](#)

ATH-M50XWH

Performance praised by top audio engineers
Exceptional clarity throughout an extended frequency range, with deep, accurate bass response



[More info](#)

YAMAHA - HPH-MT8

Closed-back, Circumaural Studio Monitor Headphones, Padded carrying bag, Adaptor included. 15Hz - 28kHz Frequency Response



[More info](#)

SENNHEISER HD 300 PRO

Closed back Over-ear Headphones, 64 Ohm, 6Hz - 25kHz. Highest resolution due to accurate and linear sound reproduction



[More info](#)

YAMAHA - HPH-MT7

▪Closed-back, Circumaural Headphones with 40mm Drivers and Round Ear Cups - Black. Specifically designed for mixing. 15Hz-25kHz Frequency Response



[More info](#)

AKG - 'K371

Over-Ear, Closed-Back, Foldable Studio Headphones, 5Hz - 40kHz Freq Response, 32 Ohms



[More info](#)

FOCAL LISTEN PRO

Circum-Aural Closed Back Headphones, 5Hz – 22kHz, 40mm Mylar / Titanium Driver, 32 Ohms



[More info](#)

BEYERDYNAMIC DT 100 400 OHM

Closed Back Studio Headphone (400 Ohm), Circumaural, 30Hz-20kHz



[More info](#)

BEYERDYNAMIC DT 150

Closed-Back Over-Ear Monitor Headphones, 5 - 30000Hz (250 Ohm)



[More info](#)

BEYERDYNAMIC DT 250

Lightweight Closed-Back Over-Ear Headphones for Broadcast and Recording, 10-30kHz - 250 Ohm



[More info](#)

V-MODA CROSSFADE M-100

Black Crossfade M-100 Over-Ear Headphones - 50mm Dual Diaphragm, Memory Foam Cushions, Cliqfold Hinge



[More info](#)

AUDIX - A152

Closed-back Circumaural Headphones with Extended Bass Response, 50mm drivers, Swivel Ear Cups, Travel Case



[More info](#)

AUSTRIAN AUDIO 'HI-X50

Professional On-Ear Headphones, Foldable construction, memory foam earpads, 5 Hz - 28 kHz



[More info](#)

V-MODA M-100 MASTER

Closed-back, Circumaural Headphones with Dual-diaphragm Driver and Passive Noise Isolation



[More info](#)

AUDIO TECHNICA ATH-M70X

Professional Monitor Headphones, 5 – 40,000 Hz, with proprietary 45 mm large-aperture drivers



[More info](#)

SHURE AUSTRIAN AUDIO - HI-X60

Closed-back Circumaural Headphones with High-excursion Proprietary Drivers, Detachable Cables. 5Hz-28kHz Frequency Response



[More info](#)

V-MODA M-200-BK

Closed-back Headphones with 50mm Neodymium Drivers, 5Hz-40kHz Frequency Response, Carry Case included

KEYBOARD STANDS

Keyboard Stands - Support for every Player

A good keyboard stand provides essential stability, comfort, and convenience, whether you're at home, in the studio, or on stage.

- X-Frame Stands – Lightweight, foldable, and height-adjustable. Great for portability and everyday use.
- Z-Frame Stands – Sturdy and compact with enhanced stability. Ideal for heavier keyboards and studio setups.
- Table-Style Stands – Solid and professional, perfect for 88-key pianos or permanent setups.
- Tiered Stands – Play two or more keyboards with multi-level support for flexible performance setups.

From beginner models to pro-level rigs, we have the right stand to suit your keyboard and playing needs.



[More info](#)

GRAVITY KSX 1

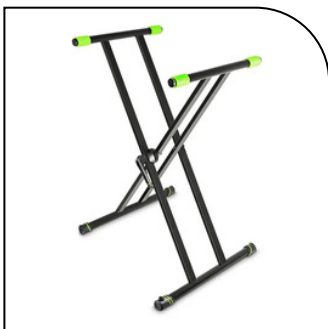
Keyboard Stand with Varifoot Levelling, Reinforced Connection Points, Interchangeable Colour Rings
Max load (support): 55 kg



[More info](#)

ADAM HALL SKS03

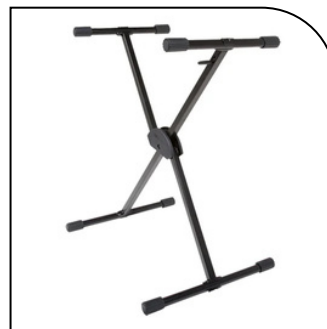
Stable keyboard stand with square-section double bracing and quick adjustment.
Save load: 40 kg



[More info](#)

GRAVITY KSX 2

KDouble X-Form Keyboard Stand
Keyboard Stand with Varifoot Levelling, Reinforced Connection Points. Max load (support) 65 kg



[More info](#)

ROLAND KS-10X

Adjustable X Stand For Portable Keyboards.



[More info](#)

STAGG ADJUSTABLE MIXER/KEYBOARD STAND

This stand is ideal for the mobile sound engineer or keyboard player with weighted key stage piano. Max load :50kg



[More info](#)

STAGG ADJUSTABLE MIXER / KEYBOARD STAND

Adjustable Mixer and Keyboard Stand in Black, 84cm Max Width, 70cm - 80cm Height
Max load: 60 kg



[More info](#)

GRAVITY KS TS 01 B

Powder Coated Keyboard Stand Table, 90kg Max Load Weight - Black



[More info](#)

STAGG MXS-A1 PLUS

Adjustable Mixer/Keyboard Stand, 50kg Maximum Weight, Black.
Max Load: 60 kg



[More info](#)

ROLAND KS-10Z

Keyboard Z-Stand, Suitable for Large and Heavy Stage Pianos and Keyboards. Weight capacity: 220 lb.



[More info](#)

KETRON STAND FOR EVM MODULE

Adjustable Height Stand for EVM Module



[More info](#)

STAY SLIM TWO TIER KEYBOARD STAND (SILVER)

Lightweight Two Tier Keyboard Stand with Carry Bag (Silver Finish).Maximum Weight Capacity: 20kg



[More info](#)

ROLAND KS-12

Portable, Sturdy Keyboard Stand. Can hold the heaviest 76-key keyboards securely



[More info](#)

STAY SLIM TWO TIER KEYBOARD STAND (BLACK)

Lightweight Two Tier
Keyboard Stand with Carry
Bag (Black Finish).
Maximum Weight
Capacity: 20kg



[More info](#)

ADAM HALL SKS22XB

Designed for 2 professional
keyboards. Compact design
Feet and arms can be
integrated into the base stand
for easy transportation.
Heavy load capacity



[More info](#)

ROLAND OPEN DESIGN PORTABLE STAND

Open Design Portable
Stand for 88-Note
Keyboards. Maximum
Weight Capacity: 70 kg



[More info](#)

ON-STAGE QUANTUM CORE COLUMN STAND

Quantum Core Column
Keyboard Stand, Integrated
Cable Management, 2 Tiers
with Independent Height
Adjustment



[More info](#)

YAMAHA L-7B STAND FOR GENOS /GENOS 2

Tier Keyboard Stand for
Genos Workstation.



[More info](#)

ADAM HALL SKS024

Keyboard Stand Extension.
Compatible SKS01 /
SKS03



[More info](#)

ON-STAGE UNIVERSAL 2ND TIER

Universal 2nd Tier for X-
and Z-Style Keyboard
Stands, Add An Extra Tier
To Your Keyboard Stand



[More info](#)

GRAVITY KS MKS 01 KA B

Support Arms for Multi
Keyboard Stand.
Expansion supports for KS
MKS



[More info](#)

STAY SLIM TWO TIER KEYBOARD STAND (BLUE)

Lightweight Two Tier
Keyboard Stand with Carry
Bag (Blue Finish).
Maximum Weight
Capacity: 20kg



[More info](#)

STAY SLIM TWO TIER KEYBOARD STAND (RED)

Lightweight Two Tier
Keyboard Stand with Carry
Bag (Red Finish).
Maximum Weight
Capacity: 20kg



[More info](#)

STAY SLIM TWO TIER KEYBOARD STAND (WHITE)

Lightweight Two Tier
Keyboard Stand with Carry
Bag (White Finish).
Maximum Weight
Capacity: 20 kg

P E D A L S

Sustain & Expression Pedals – Essential Tools for Every Keyboard Player

When it comes to enhancing your keyboard playing, two of the most valuable accessories are the sustain pedal and the expression pedal. These simple tools can dramatically increase the musicality and realism of your performance.

The sustain pedal works much like the right pedal on a piano. When pressed, it allows notes to continue sounding even after you lift your fingers, creating a smooth, connected sound. It's essential for ballads, classical pieces, and any style where you want flowing, legato playing.

The expression pedal, on the other hand, gives you real-time control over volume or assigned effects like filter sweeps or modulation. It's ideal for organ swells, string fades, or dynamic changes in live performance. Most modern keyboards let you customise what the pedal controls, making it a versatile tool for shaping your sound. Both pedals are plug-and-play with most arranger and workstation keyboards, and they're an affordable way to bring added emotion, depth, and control to your music.



NEKTAR NP-2

Universal Piano Style Keyboard Sustain Foot Switch Pedal. Polarity switch – works with all keyboards

[More info](#)



NEKTAR NX-P

Expression Pedal with High-Grip Rubber Contact Surface. Polarity switch, 6ft cable with 1/4" TRS jack plug

[More info](#)



ROLAND DP-10

High-quality pedal with non-slip rubber base. Extra long cable for stacked keyboard setups.

[More info](#)



STUDIOLOGIC - VFP2/15B

Piano Style Dual Sustain Pedal, 1x TRS Jack. Perfect action sustain pedal along with a switch pedal in one handy package

[More info](#)



[More info](#)

KORG - 'EXP-2'

Light Weight & Compact
Volume Pedal, Expression
Pedal, Foot Controller.



[More info](#)

YAMAHA FC-7 FOOT CONTROLLER

Heavy-duty foot controller
for volume changes

ESSENTIAL ACCESSORIES

Essential Accessories for Your Keyboard – Play in Comfort, Store with Confidence

To get the most out of your keyboard, the right accessories can make all the difference. Whether you're performing on stage, practising at home, or transporting your instrument, having a few key items ensures your setup is complete, comfortable, and reliable.

Bags & Cover

Protecting your keyboard & Mixers during transport is vital. A padded keyboard bag helps shield your instrument from bumps, knocks, and the weather. Available in various sizes to suit all models, these are must-haves for gigging musicians and anyone on the move.

Benches

Comfort is key when playing. A sturdy, adjustable bench provides the right height and support for long practice or performance sessions, helping to avoid strain.

Cables

High-quality audio cables ensure a clean, noise-free connection to your speakers, amplifier, or PA system.

BAGS & COVERS



ROLAND PROTECTIVE KEYBOARD DUST COVER

Dust Cover For 61-Note
Keyboards, Stretchy Nylon
Material, Integrated
Drawstring

[More info](#)



ROLAND STRETCH MEDIUM KEYBOARD DUST COVER

Fits Most 76-Key
Keyboards, Black
Stretch Nylon,
Drawstring Closure

[More info](#)



[More info](#)

ROLAND LARGE STRETCH KEYBOARD DUST COVER

Dust Cover for 88-Note Keyboards, Drawstring Closure, Stretch Nylon



[More info](#)

KETRON KEYBOARD BAG FOR 61 KEYS

Bag is suitable for keyboards with 61 keys. It features zips, a strap and padded carry handles



[More info](#)

KETRON KEYBOARD BAG FOR 76 KEYS

Bag is suitable for keyboards with 76 keys. It features zips, a strap and padded carry handles



[More info](#)

ROLAND 76-KEY SMALL GOLD SERIES KEYBOARD BAG

76-Key Small Gold Series Keyboard Bag With Wheels, Durable Exterior, Plush Interior, Impact Panels



[More info](#)

MACKIE ONYX8 CARRY BAG

Carry case for 'ONYX8' Mixing Desk



[More info](#)

RCF CARRYING BAG FOR F10XR

Keyboard Stand Extension. Compatible SKS01 / SKS03



[More info](#)

RCF CARRYING BAG FOR F6X

Padded Duffle Bag for RCF F6X Mixing Console

BENCHES



[More info](#)

STAGG - KEB-A10

Adjustable X-Style Keyboard Bench, Height adjustable in 3 positions with safety lock-screw



[More info](#)

CHORD DELUXE

Deluxe Keyboard Bench, Multi-height adjustment, Foldable X-frame



[More info](#)

ON-STAGE KEYBOARD / PIANO BENCH (BLACK)

Piano Bench, Solid Wood Construction, 1.5" Padded Seat, High Density Foam



[More info](#)

ON-STAGE KEYBOARD / PIANO BENCH (BROWN)

Rosewood Wooden Keyboard / Piano Bench, Solid Wood Construction, 1.5" Padded Seat, High Density Foam



[More info](#)

ROLAND RPB-100

Solid Wood Piano Bench with Storage Compartment - Satin White



[More info](#)

ROLAND RPB-100

Piano Bench, Satin Black, Vinyl Seat, Music Compartment



[More info](#)

STAGG - KEB-A60

Adjustable X-Style Keyboard Bench, Height adjustable in 4 positions with safety lock-screw



[More info](#)

YAMAHA B1 PIANO BENCH - WHITE ASH

Piano Stool (White Ash)



[More info](#)

YAMAHA B1 PIANO BENCH - BLACK

Piano Stool (Black)



[More info](#)

YAMAHA B1 PIANO BENCH - ROSEWOOD

Piano Stool (Rosewood)



[More info](#)

YAMAHA B1 PIANO BENCH - WHITE SATIN

Piano Stool (White Satin)



[More info](#)

ROLAND BNC-05

Digital Piano Bench, Light Oak Finish.
Adjustable Height



[More info](#)

ROLAND RPB-220 PIANO BENCH WITH VELOUR SEAT

Adjustable-height bench in Black. Solid wood construction, plush velour seat top for comfort



[More info](#)

ROLAND RPB-220RW PIANO BENCH WITH VELOUR SEAT

Adjustable-height bench in Rosewood. Solid wood construction, plush velour seat top for comfort.



[More info](#)

ROLAND RPB-300WH

Adjustable-height benchPiano Bench with Cushioned Seat (Satin White).



[More info](#)

ROLAND RPB-D100BK DUET PIANO BENCH, SATIN BLACK

Cushioned seat top
Storage compartment below the seat



[More info](#)

ROLAND RPB-D100RW DUET PIANO BENCH ROSEWOOD

Duet Piano Bench with Storage Compartment (Rosewood)



[More info](#)

ROLAND RPB-D300BK DUET SIZE PIANO BENCH, SATIN BLACK

Solid wood construction
Cushioned seat top



[More info](#)

ROLAND RPB-400BK PIANO BENCH SATIN BLACK

Premium Height Adjustable Piano Bench, Satin Black



[More info](#)

ROLAND RPB-400RW PIANO BENCH ROSEWOOD

Premium Height Adjustable Piano Bench, Rosewood



[More info](#)

ROLAND RPB-400WH PIANO BENCH SATIN WHITE

Premium Height Adjustable Piano Bench, Satin White



[More info](#)

ROLAND RPB-500BK PIANO BENCH WITH STORAGE COMPARTMENT

Satin Black Piano Bench with Storage Compartment and Cushioned Seat Top



[More info](#)

ROLAND RPB-D400RW DUET PIANO BENCH ROSEWOOD

Duet Piano Bench with Cushioned Seat Top and Storage Compartment (Rosewood)

CABLES MINI-JACK



[More info](#)

3M STAGG STEREO MINI-JACK

3m Stagg 3.5mm Stereo Jack (M) to 3.5mm Stereo Jack (M) Cable - Minijack Cable



[More info](#)

1M STAGG STEREO MINI-JACK TO MINI-JACK

1m Stagg 3.5mm Stereo Jack (M) to 3.5mm Stereo Jack (M) REAN N-Series



[More info](#)

2M STAGG STEREO MINI-JACK TO MINI-JACK CABLE

2m Stagg 3.5mm Stereo Jack (M) to 3.5mm Stereo Jack (M) REAN N Series



[More info](#)

ADAM HALL CABLES 3M XLR MALE X MINIJACK BALANCED CABLE

Adam Hall Cables - 3 STAR BWM 0300 3m XLR Male x Minijack Balanced Cable



[More info](#)

3M STAGG STEREO MINI-JACK TO MINI-JACK CABLE

3m Stagg 3.5mm Stereo Mini-Jack (M) to 3.5mm Stereo Mini-Jack (M) REAN N Series



[More info](#)

ROLAND 5FT / 1.5M 1/8-INCH TRS INTERCONNECT CABLE

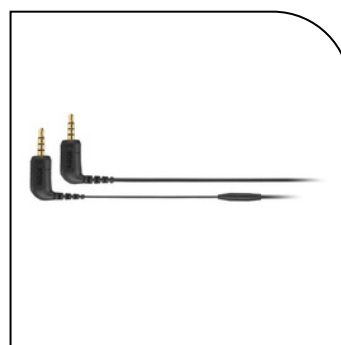
1.5m Roland 3.5mm (1/8") Jack to 3.5mm (1/8") Jack, Multi-strand, Black Series



[More info](#)

20FT STAGG STEREO MINI-JACK TO MINI-JACK CABLE

6M Stagg 3.5mm Stereo Jack (M) to 3.5mm Stereo Jack (M) REAN N Series



[More info](#)

RODE SC10 JUNCTION BOX FOR CABLE MANAGEMENT

Rode 'SC10' 3.5mm TRRS to TRRS cable, High-quality shielded patch cable, compatible with VideoMic NTG



[More info](#)

ADAM HALL CABLES
3M NEUTRIK XLR
FEMALE TO MINIJACK
TRS CABLE

Adjustable X-Style
Keyboard Bench, Height
adjustable in 3 positions
with safety lock-screw

CABLES STEREO 1/4" JACK



[More info](#)

SCAN PRO AUDIO -
6.35MM STEREO JACK
TO 6.35MM STEREO
JACK LEAD - 1.5M

1.5m Scan Pro Audio -
6.35mm Stereo Jack to
6.35mm Stereo Jack
Balanced Audio Cable



[More info](#)

1M STAGG STEREO
6.3MM JACK- JACK
CABLE

1M Stagg 6.3mm Stereo
Jack (M) to Stereo
6.35mm Jack (M)
Balanced Audio Cable



[More info](#)

SCAN PRO AUDIO -
6.35MM STEREO JACK
TO 6.35MM STEREO
JACK LEAD - 3M

3m - Scan Pro Audio -
6.35mm Stereo Jack to
6.35mm Stereo Jack
Balanced Audio Cable



[More info](#)

3M STAGG STEREO
6.3MM JACK TO JACK
AUDIO CABLE

3m Stagg 6.3mm Stereo
Jack (M) to Stereo
6.3mm Jack (M)
Balanced Cable



[More info](#)

**1.5M ADAM HALL
AUDIO CABLE 6.3MM
MALE STEREO JACK
TO 6.3MM MALE
STEREO JACK**
1.5m Cable 6.3mm Male
Stereo Jack to 6.3mm
Male Stereo Jack



[More info](#)

**6M STAGG STEREO
6.3MM JACK TO JACK
CABLE**

6M Stagg 6.3mm Stereo
Jack (M) to Stereo 6.3mm
Jack (M) Balanced Cable



[More info](#)

**SCAN PRO AUDIO -
6.35MM STEREO
JACK TO 6.35MM
STEREO JACK LEAD -
6M**
6m - 6.35mm Stereo Jack
to 6.35mm Stereo Jack -
Balanced Audio Cable



[More info](#)

**3M ADAM HALL
AUDIO CABLE 6.3MM
MALE STEREO JACK
TO 6.3MM MALE
STEREO JACK**
3m Cable 6.3mm Male
Stereo Jack to 6.3mm
Male Stereo Jack



[More info](#)

**ROLAND 3FT / 1M
1/4" TRS-1/4" TRS
BALANCED
INTERCONNECT
CABLE**
1m Roland 6.3mm TRS-
6.3mm TRS, Balanced,
Multi-strand, Black Series



[More info](#)

**1M HOSA 1/4" STEREO
JACK CABLE**

1m Hosa 6.3mm Stereo
Jack (M) to 6.3mm
Stereo Jack (M)
Balanced Audio Cable



[More info](#)

**6M ADAM HALL
AUDIO CABLE 6.3MM
MALE STEREO JACK
TO 6.3MM MALE
STEREO JACK**
6m Cable 6.3mm Male
Stereo Jack to 6.3mm
Male Stereo Jack



[More info](#)

**3M STAGG 1/4"
STEREO JACK TO JACK**

3M Stagg 6.3mm Stereo
Jack (M) to 6.3mm
Stereo Jack (M) REAN
N-Series



[More info](#)

**1M STAGG STEREO
6.3MM JACK TO
6.3MM JACK**

1M Stagg 6.3mm Stereo
Jack (M) to Stereo 6.3mm
Jack (M) REAN N-Series



[More info](#)

**3M ADAM HALL
REAN AUDIO CABLE
6.3MM MALE STEREO
JACK TO 6.3MM MALE
STEREO JACK**

3m Cable 6.3mm Male
Stereo Jack to 6.3mm Male
Stereo Jack



[More info](#)

**1.5M / 5FT HOSA 1/4"
TRS BALANCED
PATCH LEAD**

1.5m Hosa 6.3mm Stereo
Jack (M) to 6.3mm Stereo
Jack (M) REAN



[More info](#)

**ROLAND 5FT / 1.5M 1/4"
TRS-1/4" TRS
BALANCED
INTERCONNECT CABLE**

1.5m-6.3mm (1/4") TRS
Stereo Jack to 6.3mm
(1/4") TRS Cable,
Balanced, Multi-strand



[More info](#)

**ROLAND 15FT / 4.5M
1/4" TRS-1/4" TRS
BALANCED
INTERCONNECT
CABLE**

4.5m-6.3mm (1/4") TRS to
6.3mm (1/4") TRS Stereo
Jack, Multi-strand.



[More info](#)

**6M STAGGSTEREO
AUDIO CABLE 6.3MM
JACK TO 6.3MM JACK**

6M Stagg 6.3mm Stereo
Jack (M) to 6.3mm
Stereo Jack (M) REAN
N-Series



[More info](#)

**5M ADAM HALL
NEUTRIK BALANCED
AUDIO CABLE 6.35MM
MALE STEREO JACK
TO 6.35MM MALE
STEREO JACK**

5m Cable 6.35mm Male
Stereo Jack to 6.35mm
Male Stereo Jack



[More info](#)

**10M ADAM HALL
NEUTRIK BALANCED
AUDIO CABLE 6.35MM
MALE STEREO JACK TO
6.35MM MALE STEREO
JACK**

10m Audio Cable 6.35mm
Male Stereo Jack to
6.35mm Male Stereo Jack

XLR CABLES



[More info](#)

60CM/2FT MIC CABLE XLR F-XLR M BY STAGG

60cm Stagg XLR (M) to
XLR (F) : Male to Female



[More info](#)

SCAN PRO AUDIO XLR F TO XLR M CABLE - 1.5M

1.5m Scan Pro Audio -
XLR F to XLR M Premium
Mic / Balanced Audio
Cable



[More info](#)

1M STAGG XLR(M)- XLR(F) MICROPHONE CABLE (SMC1)

1m - Stagg XLR M to XLR
F Microphone Cable -
SMC1



[More info](#)

1M ADAM HALL REAN MICROPHONE CABLE FEMALE XLR TO MALE XLR

1m Adam Hall REAN
Microphone Cable Female
XLR to Male XLR



[More info](#)

SCAN PRO AUDIO XLR F TO XLR M CABLE - 3M

3m Scan Pro Audio - XLR
F to XLR M Premium Mic /
Balanced Audio Cable



[More info](#)

STAGG XLR(M)-XLR(F) MICROPHONE CABLE (SMC3) 3M

3m Stagg XLR (M) to
XLR (F) Microphone
Cable - SMC3



[More info](#)

50CM HOSA XLR(F)- XLR(M) PATCH LEAD

0.5m Hosa XLR (M) to XLR
(F) Microphone / Balanced
Audio Cable



[More info](#)

3M ADAM HALL MICROPHONE CABLE FEMALE XLR TO MALE XLR

3m Adam Hall Microphone
Cable Female XLR to Male
XLR



[More info](#)

HOSA PRO CABLE XLR3F - XLR3M 3FT

1m Hosa XLR (M) to XLR (F) Audio Cable



[More info](#)

1M HOSA PRO CABLE XLR(F)-XLR(M)

1m Hosa XLR (M) to XLR (F) Microphone / Balanced Audio Cable



[More info](#)

SCAN PRO AUDIO XLR F TO XLR M CABLE - 6M

6m - Scan Pro Audio - XLR F to XLR M Premium Mic / Balanced Audio Cable



[More info](#)

6M STAGG XLR(M)- XLR(F) MICROPHONE CABLE (SMC6)

6m Stagg XLR (M) to XLR (F) Microphone Cable - SMC6



[More info](#)

SCAN PRO AUDIO XLR F TO XLR M CABLE - 9M

9m - Scan Pro Audio - XLR F to XLR M Premium Mic / Balanced Audio Cable



[More info](#)

ROLAND 3FT / 1M BLACK SERIES MICROPHONE CABLE

1m Roland XLR - XLR Microphone Cable Multi-Strand, Black Series

Our Affiliate Partnership with Scan Pro Audio

We're proud to have partnered with Scan Pro Audio to bring you some of the very best deals on arranger keyboards and musical equipment. Through this affiliate program, when you purchase an instrument using the links provided by Keyboard World, you not only receive the outstanding customer service and after-sales support that Scan is renowned for — but also the added benefit of direct backup and advice from ourselves at Keyboard World.

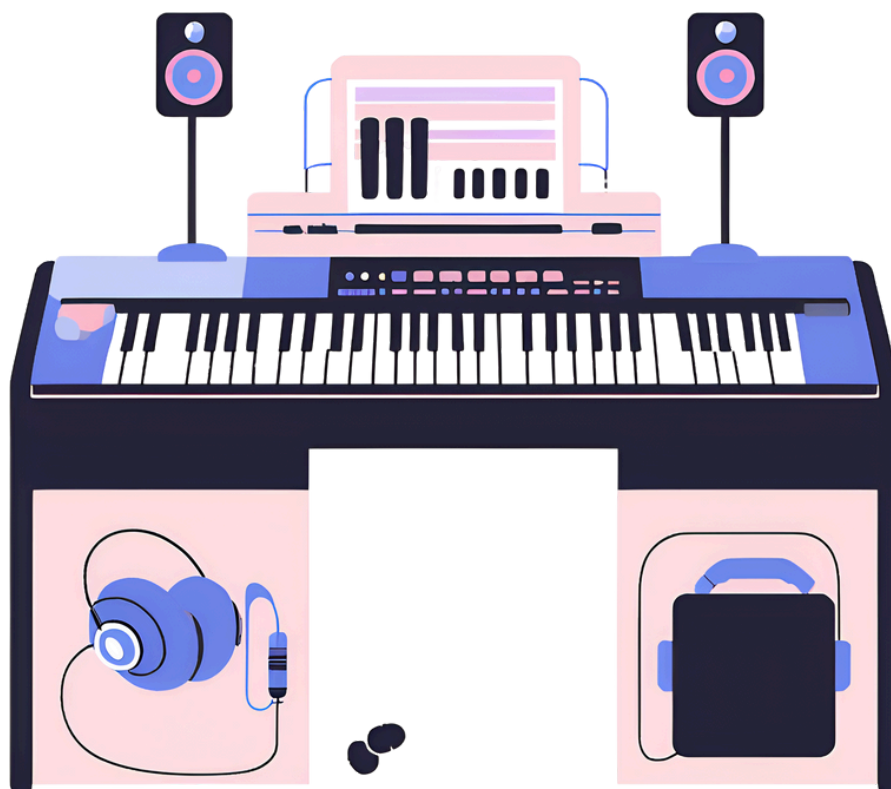
This dual support means peace of mind for you, with expert help available from both Scan and our own experienced team to ensure you get the very best from your instrument.

Every commission we earn through these affiliate links goes directly back into the continued development of Keyboard World. It helps us to produce even more free content, including our popular videos, tutorials, and live webinars, to support players of all levels.

Thank you for taking the time to browse through our latest catalogue. We hope you've found something of interest and inspiration within its pages. We'll be continuously updating the catalogue with the latest gear, helpful content, and featuring exclusive special offers via our website at www.keyboardworld.co.uk.

Your support means everything — and helps us to keep the music playing.

Paul Carman
KEYBOARD WORLD





KEYBOARD
WORLD
MUSIC LTD



www.keyboardworld.co.uk

paul@keyboardworld.co.uk